

AMROTEC®

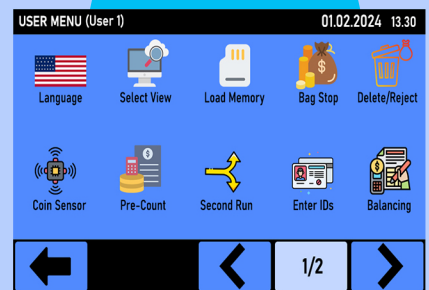
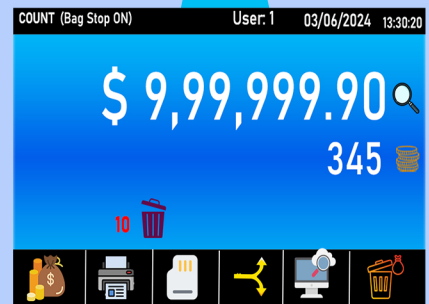
H6 Touch

HIGH-SPEED COIN SORTING MACHINE w/Foreign Coin Detection

7"

Touch Display

Stylus Pen for
touch screen display



High-Volume Coin Processing at CIT, Casino and various Cash centers

Experience the ease of modern Coin Counting and Sorting operation with AMROTEC's H6 model at a high-speed of 3,000 coins per min. It is Robust, and includes 12,000 coin hopper. It is user-friendly and integrated cash-management software with 7" touch Screen for clear visibility, YET affordable. Touch or use our pen (provided) to navigate User-Interface and Operation.

AMROTEC "H6" Coin Sorter is a game-changing solution meticulously engineered to elevate your coin handling operations. Whether you're a financial institution, or CIT, or vending or transportation businesses, or casino, the H6 empowers you to streamline processes, reduce errors, and enhance customer satisfaction.

ROBUST, USER-FRIENDLY AND EXTREMELY PRODUCTIVE

Main Features:

Multi-Channel Sensing & advanced algorithm

AMROTEC's H6 is a high-performance coin counting and sorting machine capable of handling up to 3000 coins per minute. Its Multi-channel Sensor System, equipped with three designated sensors and advanced detection capabilities, ensures accurate and reliable coin identification. Additionally, H6 offers flexible sorting options, streamlining your coin processing workflow.

Productive, Efficient yet Affordable

AMROTEC's H6 is designed for high-volume operation. Its Coin Hopper, touch-interface, 7" screen, and coin path are all aligned with customer's reach and no permanent bending and standing up is needed. The large but low hopper gives ideal visibility and facilitates the machine's coin feeding. User-friendly Functions can be adapted to your workflow requirements.

Advancement in Technology and Digital-Trend

All cash center operations require coins to be sorted fast, continuous and reliable manner into large coin bags for further processing. With Upto 3,000 coins per minute and easy accessible hopper with a capacity over 10,000 coins - H6 provides just that. Further, with reliable forged coin detection, H6 also provides excellent foreign and mutilated coin rejection to a reject bin. H6 is also constructed with Durable material combination of special alloy and ceramics.

- Highly advanced coin detection sensors for high accuracy and throughput efficiency up to 99.8%.
- Programmable full-bag stop for all denominations of US coins and display status on touch screen. Integrated cash-management system assuring users of instant transparency.
- Easy to operate, with 7" TFT color touch screen interface with quick access buttons on the control panel. User-friendly.



Quick Access Buttons



Large Coin feeder, Hopper



Direct Coin Disc access



Coin Bag Handling



10"
(255mm)

IDEAL HEIGHT
The low height allows loading and bagging of coins at an ergonomic desktop height.

HIGH-SPEED WITH ACCURATE EXECUTION 3000 COINS PER MINUTE

Specification

System	Belt and Roller Driven System
Coin Recognition	Multi-channel Metal Alloy sensor detection
Foreign Coin Detection	Advanced Foreign Coin detection sensor (deliver to dedicated Reject coin Box)
Counting Speed	Up to 3,000 US Coins Per Minute
Adaptability country's coin	USD, CAD, EURO and Up to 20 other world country's coins S/W can be configured into.
Coin Hopper Capacity	Up to 10,000 Coins - can interface with our Coin Lifter system
Coin Size	Configure with all US Coins (SBA, Golden \$)
Display	7" TFT Color Touch Screen Display with 3D Position adjustment.
Quick Access	5 Quick Access Buttons on control panel for quick access.
Interface	RS-232 (Serial Printer Port), USB Port (Software Upgrade), and 3.0, LAN
Options	Remote Customer Display Unit, Coin Lifter, Thermal Printer (Serial; SNBC Printer) etc
Power Supply	AC100V ~ 240V, 50/60Hz, 3A
Consumption	< 300W
Dimension	34" L x 16.5" W x 20" [w/o Floor Stand] 860mm (L) x 415mm (D) x 510 mm (H)
Net Weight	140 lbs. (without floor stand) 64 kgs.

Specifications are subject to change without further notice.

Authorized Dealer